



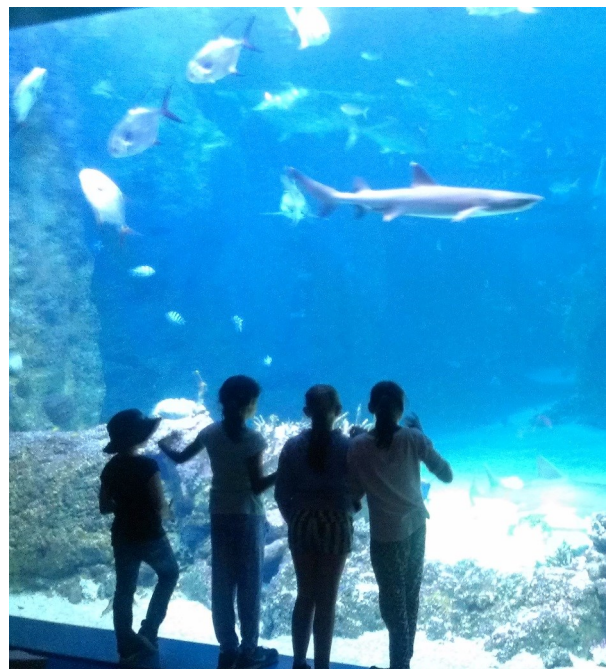
**SYDNEY & BLUE MOUNTAINS EXCURSION 3-6G & 2-6J**







**SYDNEY & BLUE MOUNTAINS EXCURSION 3-6G & 2-6J**





## 2J PERSUASIVE WRITING

In 2J we are learning how to persuade a reader of an opinion or belief. We are learning how to use convincing language.

I prefer cats more than dogs.

They are cleaner. I think this is a good thing because the owner doesn't have to wash the cat.

Cats are cute. They are cuddly. They are playful and they are soft and furry.

Cats are good at hearing. Cats are friendly and when they hear you come home they say hello by going around your legs. They can hear mice and insects in your home and they can catch them.

These are all the reasons why I prefer cats.

By Matthew Tocknell



## **FROM THE CLASSROOM**

In 1H we have been reading Possum Magic by Mem Fox. We have also been learning about possums. Here are some pieces of our writing.



### **Possums**

Possums live in Australia in Tasmania and on the east coast. They live in trees and their nest is football sized.

Possums eat leaves and flowers and special fruit. They love gum leaves. Possums feed their babies milk. They give birth to live young.

Possums have grey and brown and red fur. They live for up to four years. Possums use their tails to grip onto branches and to carry things. It can help them balance.

Possums have sharp claws to grip things and hang on safely.

Possums are nocturnal because they come out at night.

I like possums because they use their tails to balance.

Izac



### **Possums**

Possums live in Australia, in Tasmania and on the east coast. They live in trees.

Possums like to eat gum leaves and flowers.

Possums feed their baby milk and carry the baby on their back.

Possums have sharp claws to climb big long trees. Possums use their claws to pick up fruit.

Possums have a bushy tail. They use their tail to go upside down to get fruit.

Ngulawaa

### **Possums**

Possums live in Tasmania and on the east coast of Australia. They live in a football sized nest. They live in big trees.

Possums eat flowers and gum leaves. They also eat fruit.

Possums feed their babies milk. They give birth to live young.

Possums carry things with their claws. They also use their claws to climb trees and to grab things like their food. They can use their claws to help another possum if they are in danger.

Tally

1D

# Making Yummy Sausage Rolls



## 1/2 Assembly Item and Writing

### The beginning of 'The Mermaid King'

Romy was scared of mermaids. It was a big mermaid monster that pulled her to the bottom, threw her to the other half of the sea and whacked her to the mean Mermaid King.

She didn't like the mermaids. Not at all, not one bit. But she loved looking at mermaid tails. She had pictures of sparkly ones, some that had stripes and some with rainbows. Then one day she found a bracelet. It was shaped like a pearl, violet on the outside and pink inside.

Written by Hollie 1/2W





# NOTICEBOARD

## SELECTIVE SCHOOLS APPLICATIONS FOR YEAR 7, 2016 ARE NOW OPEN ONLINE

Online applications for Year 7 Selective High School Placement in 2016 opened on Tuesday 14 October 2014 and will remain open until 10pm on Monday 17 November 2014.

Parents who have indicated their intention to apply but have not done so should apply as quickly as possible.

All parents must apply online. There are no paper applications this year.

## PRESENTATION DAY CEREMONY

5th December 2014.

Commencing at 9:30 in the school hall. All welcome.  
Morning tea will be provided for visitors at the conclusion  
of the ceremony.



## IGA

**Carlo's Independent Supermarket**  
**Robert Street Shopping Village**

Ph 6765 8552 - Fax 67623549

**Open**

Mon - Sat 8 am till 8 pm

Sunday 9 am till 8 pm

**Tuesday Pensioners discount**

**Free delivery for orders above \$20.00**



**Real bread. Real rewards.**



Hi-Fibre Lo-GI  
or Chia Loaf



Cob/Vienna



Continental



Block Loaf



6 Traditional  
Rolls

*Bakers Delight*  
We're for real.

**K Mart Plaza & Tamworth Shopping World**

**Fantastic Supporters of our Eat Well 2 Learn Well (Breakfast)**

**Narelle Simmonds**

5 bourke street

p 6766 2657

m 0419 180 869 f 6766 2658

the **Executive  
Laundrette**



*you wash*

Coin operated laundry open 7 days 6am - 9pm

*we wash*

Drop off pick up from store or opt for valet service to home or  
hand delivered to your workplace Mon to Fri 8am - 6pm

## FOR SALE - HILLVUE SCHOOL JACKETS

School jackets can be purchased  
through the front office.

Extra small, Small, Medium &  
Large fleecy lined spray jackets  
\$48.



## HANNAFORDS BUS SERVICE

Family owned & operated  
in the heart of country—  
Tamworth

Safe reliable student travel from  
Coledale, Westdale, Bective,  
Bithramere, Goonoo Goonoo,  
Kingswood Estate, Gowrie and  
Winton areas of Tamworth.

Carters to a destination of your  
choice

Call us on 02 6765 1900  
[www.hannafordscoaches.com.au](http://www.hannafordscoaches.com.au)



## Kevin Bartlett Cycles

111A Bridge Street Tamworth  
ph 67652414



Are you looking for a long day care centre for your pre-school children? Your child is welcome! Your local Long Day Care Centre is just around the corner from Hillvue School in Janelle St.

Phone 67628452

Email: [reception@janellestreetcentre.com](mailto:reception@janellestreetcentre.com)

Christian  
Caring  
Committed to Excellence

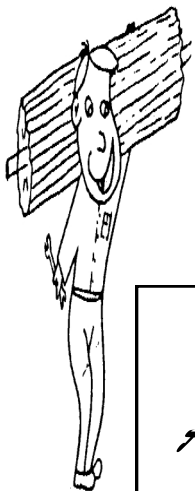
Janelle Street Centre  
4 Janelle Street,  
South Tamworth

## ORTHODONTICS at Tamworth



the team for better smile esteem  
- Flexible payment plans  
- Straightening smiles without removal of teeth  
- Guarantee's on our treatment results

Suite 3, 158 marius street tamworth 2340  
p. 67663030 | [www.smileesteem.com.au](http://www.smileesteem.com.au) | f. 67663060



Craig  
Albertson



99 KABLE AVENUE,  
TAMWORTH NSW 2340  
Phone: (02) 6766 1583  
Mobile: 0409 225 420  
**The Domestic and  
Industrial Door Specialists**



## COFFEE RUN

DRIVE THRU COFFEE

Gasweld Carpark  
Cnr Goonoo Goonoo Rd &  
Bridge Street  
TAMWORTH NSW 2340  
[coffeerun.pl@gmail.com](mailto:coffeerun.pl@gmail.com)

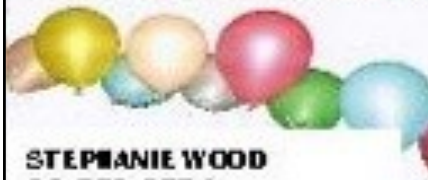
0427 628 277

... Great Coffee ... Great Service ...

## FS Party Shop



Catering equipment and hospitality supplies



STEPHANIE WOOD  
02 672 3774

44 Barnes Street, PO Box 3589,  
Tamworth, NSW 2340  
Phone: 02 6762 2844  
Fax: 02 6762 2877  
Email: [iam@fspl.com.au](mailto:iam@fspl.com.au)  
Web: [www.fspl.com.au](http://www.fspl.com.au)

# NOTICEBOARD

## DIARY DATES



### NOVEMBER

**Wednesday 12**

#### Week 6

Year 6 transition to Peel High School  
12:30pm – 2:30pm

**Wednesday 12**

Year 5 nominations for 2015 School Captains due to Mrs York.

#### Week 7

**Monday 17**

Girl's speeches

**Tuesday 18**

Boys speeches  
Voting for Captains & Prefects  
Stage 1 to 'Pete the Sheep'  
Capital Theatre, 12.30pm

#### Week 8

**Wednesday 26**

School Disco **BBQ** 6pm - 6.30pm  
School Disco 6.30pm - 7.45pm

**Wed&Thur 26&27**

Swimming Stage 1&2



### DECEMBER

**Mon/Thurs 1-4**

#### Week 9

Swimming Stage 1&2

**Friday 5**

Presentation Day - 9.30am in Hall

#### Week 10

**Monday 8**

Report Cards sent home to parents

**Mon/Thurs 8-11**

Swimming Stage 1&2

**Thursday 11**

Year 6 Formal Assembly

**Thursday 11**

Year 6 Farewell Dinner

**Friday 12**

Class Parties

**Thursday 18**

Last day of school for students



### NEWSLETTER CHANGES

The Hillvue Public School Newsletter will now be issued on a fortnightly basis.

Our Newsletter is also accessible for viewing online.

Go to:  
[www.hillvue-p.schools.nsw.edu.au](http://www.hillvue-p.schools.nsw.edu.au)

**NOW ONLINE**

**TO HELP KEEP EVERYONE SAFE PLEASE BE SURE TO USE THE PEDESTRIAN CROSSING AT ALL TIMES.**

### ASSEMBLY ITEM

Week 6	Friday 14 November	5/6K
Week 7	Friday 21 November	KP

### FRONT OFFICE

All visitors must report to the Front Office upon arrival

Office hours are from 8.30am to 4pm on school days. Please telephone 02 67657 446 during these hours.