

HILLVUE BOYS GROUP—EXCURSION TO LAKE KEEPIT

The Hillvue Boys group went on an excursion to Lake Keepit on Friday 24th October 2014. 20 Boys and 4 staff travelled by bus to Lake Keepit to enjoy a day of fishing and swimming, with the aim of consolidating the bond between the boys and their mentors.

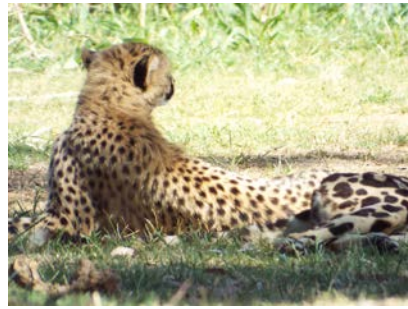
The Boys are part of the Hillvue Boys Group for term 4. The purpose of the Hillvue Boys Group is:

- To help support male students to remain at school
- Involve students in making decisions
- Provide opportunities and activities that students want to do

Most weeks, the Boys Group has a time limit of 1 hour on a Friday afternoon, so activities need to be able to be completed in that time and on school grounds. The Boys Group activities include cultural, sporting, artistic and academic activities. The excursion to Lake Keepit was a reward for the boys' participation each week and is closely linked to activities undertaken in previous weeks, such as a fishing clinic and the Feelin' Deadly Not Shame workshop.

Everyone that went to Lake Keepit had a great day and we all returned home safely. Despite the low water level, we did catch some fish and enjoyed swimming around the pontoon.





Stage 2 Dubbo



Excursion



NOTICEBOARD



PEEL HIGH SCHOOL Selective Schools Applications for Year 7 2016 are now open online

PEEL HIGH SCHOOL your only local co-educational Selective School provider would like to inform parents/guardians of current Year 5 students that registration for Year 7 2016 is now open. Parents/guardians need to register **online** with Selective Schools to enable your child to sit the Selective Schools exam in March next year.

Go to the Peel HS website and follow the Selective Schools link. www.peel-h.schools.nsw.edu.au should you require assistance please contact us on 6765 7088.

Peel High School is the only co-educational school within a 100 km radius of Tamworth to be part of the State Selective School's Network.

For further information please contact Kristen Miller on 6765 7088 or email Kristen on kristen.miller1@det.nsw.edu.au

IGA

Carlo's Independent Supermarket
Robert Street Shopping Village

Ph 6765 8552 - Fax 67623549

Open

Mon - Sat 8 am till 8 pm

Sunday 9 am till 8 pm

Tuesday Pensioners discount

Free delivery for orders above \$20.00



Real bread. Real rewards.



Hi-Fibre Lo-GI
or Chia Loaf

Cob/Vienna

Continental

Block Loaf

6 Traditional
Rolls

Bakers Delight
We're for real.

K Mart Plaza & Tamworth Shopping World

Fantastic Supporters of our Eat Well 2 Learn Well (Breakfast)

Narelle Simmonds

5 Bourke Street

p 6766 2657

m 0419 180 869 f 6766 2658

the **Executive
Laundrette**



you wash

Coin operated laundry open 7 days 6am - 9pm

we wash

Drop off pick up from store or opt for valet service to home or
hand delivered to your workplace Mon to Fri 8am - 6pm

FOR SALE - HILLVUE SCHOOL JACKETS

School jackets can be purchased through the front office.

Small, Medium & Large fleecy lined spray jackets \$48.



NOTICEBOARD pg2

BOYS TOUCH FOOTBALL

Last week the Hilluve Boys Touch team travelled to Narrabri to play the next round of the PSSA Knockout. After a hard fought game the boys went down 6-5 to Narrabri. Our boys should be very proud of their efforts.

A Huge thank you to Mrs Townswend, Ray and Simon who drove and supported the team. A fantastic effort all round!!

FARRER MEMORIAL AGRICULTURAL HIGH SCHOOL

Students in Year 5, wishing to attend Farrer in Year 7 2016, parent/guardian need to register online, between 14th October and 17th November with Selective Schools to enable them to sit the Selective Schools exam in March next year. To register go to the Farrer website: www.farrer.nsw.edu.au and follow the Selective Schools link.



TERM 4 ART AFTER SCHOOL WORKSHOP PROGRAM AT TAMWORTH REGIONAL GALLERY

These classes will encourage students to engage with new materials, subject matter and techniques

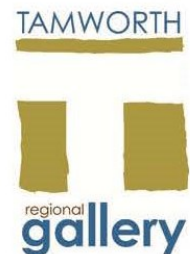
When: Over four Wednesdays. October 29, November 5, 12 & 19

Time: 4pm-5.30pm

Ages: Classes are for 7-11 years old

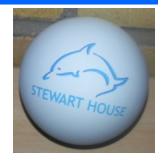
Cost: \$80 for the 4 class block

For more details or to place a booking, call the Gallery on 02 6767 5248



STEWART HOUSE HAND BALLS

New hand balls have arrived and are at the front office for sale for \$3.00



EXPRESSION OF INTEREST FOR ASSISTED TRAVEL SUPPORT OFFICER (ATSO) POSITION

The Assisted School Travel Program (ASTP) often provides additional support to students with disabilities on transport. Assisted Travel Support Officers (ATSOs) support students with complex health or behaviour needs to ensure their safe travel to and from school. If you are interested in temporary part-time work as an ATSO the following website contains information on how to apply for the position.

www.schools.nsw.edu.au/studentsupport/programs/astp/index.php

For further information please contact ASTP on 1300 338 278 or email ASTP at

atso.astp@det.nsw.edu.au

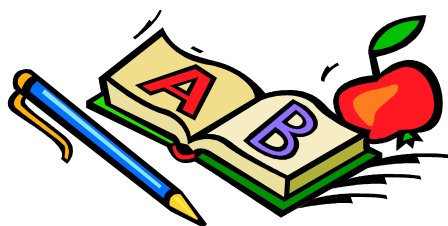
NOTICEBOARD

KINDERGARTEN ENROLMENTS FOR 2015

If you have a child that is starting Kindergarten in 2015, please come to the front office at Hillvue Public School and collect an enrolment form to complete.

Information that we require you to bring:

- * Child's Birth Certificate
- * Child's Immunisation Report
- * Proof of Address ie/ electricity or phone account



The Transition Program began on Friday 17th October and continues each Tuesday & Friday until Friday 28th November. Each child beginning school at Hillvue Public School in 2015 can attend one session per week 9.30am to 11.15am. We also have a special Health Screening Day on Wednesday 5th November where you can get things like child's hearing and teeth checked ready for school.

Our Orientation morning for children and parents will be held Tuesday 2nd December from 9.30am to 11.15am in the school hall. All transition children and parents are invited along to this important information morning. Morning tea will be provided. If you would like to attend our Transition Program please contact the school as soon as possible.

FOSTER & KINSHIP CARER FORUM

Wednesday 29th October, 11.30am-1.30pm
Tamworth Community Health, Johnson House

This forum offers Carers an opportunity to meet other and listen to presenters from health and education.

This forums presenters: "Understanding Behaviour" – Psychologists, Jodi Barton & Quentin Dignam

"Speech & Language Development"- Speech Pathologist, Sue Hombsch

" School Counselling Services"- Dept of Education, Guy Porter

RSVP: Sarah McMurtrie 67 555

HANNAFORDS BUS SERVICE

Family owned & operated
in the heart of country—
Tamworth

Safe reliable student travel from
Coledale, Westdale, Bective,
Bithramere, Goonoo Goonoo,
Kingswood Estate, Gowrie and
Winton areas of Tamworth.

Carters to a destination of your
choice

Call us on 02 6765 1900
www.hannafordscoaches.com.au



Kevin Bartlett Cycles

111A Bridge Street Tamworth
ph 67652414



Are you looking for a long day care centre for your pre-school children? Your child is welcome! Your local Long Day Care Centre is just around the corner from Hillvue School in Janelle St.

Phone 67628452

Email: reception@janellestreetcentre.com

Christian
Caring
Committed to Excellence

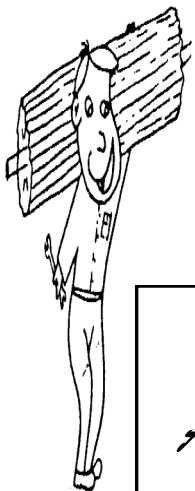
Janelle Street Centre
4 Janelle Street,
South Tamworth

ORTHODONTICS at Tamworth



the team for better smile esteem
- Flexible payment plans
- Straightening smiles without removal of teeth
- Guarantee's on our treatment results

Suite 3, 158 marius street tamworth 2340
p. 67663030 | www.smileesteem.com.au | f. 67663060



Craig
Albertson



99 KABLE AVENUE,
TAMWORTH NSW 2340
Phone: (02) 6766 1583
Mobile: 0409 225 420
**The Domestic and
Industrial Door Specialists**



COFFEE RUN

DRIVE THRU COFFEE

Gasweld Carpark
Cnr Goonoo Goonoo Rd &
Bridge Street
TAMWORTH NSW 2340
coffeerun.pl@gmail.com

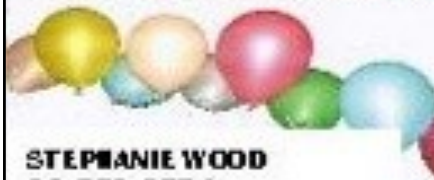
0427 628 277

... Great Coffee ... Great Service ...

FS Party Shop



Catering equipment and hospitality supplies



STEPHANIE WOOD
02 672 3774

44 Barnes Street, PO Box 3589,
Tamworth, NSW 2340
Phone: 02 6762 2844
Fax: 02 6762 2877
Email: iam@fspl.com.au
Web: www.fspl.com.au

NOTICEBOARD

DIARY DATES



NOVEMBER

Tuesday 11

Week 6

Beach to Bush 2014

Week 7

Tuesday 18

Stage 1 to 'Pete to Sheep'
Capital Theatre, 1230pm

Week 8

Wednesday 26

Swimming

Thursday 27

Swimming



DECEMBER

Monday 1/

Week 9

Thursday 4

Swimming

Friday 5

Presentation Day

Monday 8

Report Cards sent home to parents

Monday 8/

Thursday 11

Swimming

Thursday 11

Year 6 Formal Assembly

Thursday 11

Year 6 Farewell Dinner

Friday 12

Class Parties

Thursday 18

Last day of school for students



HILLVUE RAIN JACKETS FOR SALE

Compact
Poncho/Rain
Jacket. Can be
worn over your
backpack.

**\$10 each from
front office.**



ASSEMBLY ITEM

Week 4	Friday 31 October	1/2W
Week 5	Friday 7 November	3G

FRONT OFFICE

All visitors must report to the Front
Office upon arrival

Office hours are from 8.30am to 4pm on
school days.

Please telephone 02 67657 446 during
these hours.

**TO HELP KEEP
EVERYONE
SAFE PLEASE
BE SURE TO
USE THE
PEDESTRIAN
CROSSING AT
ALL TIMES.**

