

Dear Parents & Carers

Welcome back for Term Four. Term four is always a very busy term as we head into the final part of the school year. It can be a very emotional time for our Year 6 students as they finish their primary schooling and move onto high school. We need your support to ensure all students arrive at school on time every day, well rested and ready to actively engage in learning. Your continued support is greatly appreciated.

Congratulations Miss Levingston

Congratulations to Miss Levingston on her successful appointment to the position of P-2 Initiatives Officer based in the Tamworth Office. This position is for Term 4 with a possible extension. Miss Levingston commenced in her new role on Monday. I am sure you will join with me in wishing Miss Levingston all the very best in her new role. Mrs Townsend will replace Miss Levingston as KL classroom teacher for the remainder of the school year.



PRINCIPAL'S MESSAGE PG2

Term Four Newsletter

We are making some minor changes to our weekly newsletter this term. The newsletter will be printed and sent home each fortnight instead of each week. The newsletter will be sent home on the even weeks of the term (weeks 2, 4, 6, 8 & 10).

Bikes/Scooters

Pushbikes and scooters continue to be a hazard in and around the school. We have located 2 bike racks near the Waree Drive entrance to the school. All scooters and bikes will enter and leave the school through the Waree Drive entrance. Students will be responsible for security chains if they wish to ride bikes and scooters to school. All students riding bikes must wear a helmet.



Year Six T Shirts Arrive

Students who ordered Year Six Shirts received them last week. I must say they look fantastic and our students are very proud of their new shirts.



PRINCIPAL'S MESSAGE PG3

Hillvue Public School Expectations

Please find a copy of our new school expectations for all students attending Hillvue Public School. We expect all students to follow these expectations at all times. Please take some time to talk to children about the expectations and remind them that they are in place to ensure all students have the opportunity to learn in a safe and caring environment.

Important Term Four Dates

Excursions

Week 2 – Stage 2 Excursion to Dubbo Western Plain Zoo & Dubbo Gaol
– Wednesday 15 & Thursday 16 October

Week 3 – IM/ED Excursion to Sydney and The Blue Mountains
– Wednesday 22, Thursday 23 & Friday 24 October

Student Reports

Week 10 – Student reports sent home to parents – Monday 8 December

End of Year Events

Presentation Day – Week 9 - Friday 5 December

Year 6 Formal Assembly – Week 10 – Thursday 11 December

Year 6 Farewell – Week 10 -Thursday 11 December

Class Parties – Week 10 - Friday 12 December

Chris Shaw
Executive Principal

The grounds are starting to look quite welcoming after having a make over.



SPORTSVUE

TOUCH KNOCKOUT

The Boys Touch team has successfully made it to Round 5 of the competition. This game will be against Narrabri PS and is scheduled to be played in the coming weeks. Mrs Townsend is currently organising this and information will be sent out to players as soon as it becomes available.

MONDAY AFTERNOON TOUCH COMPETITION

The Monday Afternoon Touch competition recommenced this week. Game times are as follows:

NIPPERS – 4.30pm

SENIOR MIXED (BOYS DIVISION) – 5.10pm

Please assume that you play at these times unless otherwise notified.

CRICKET T20 BLAST COMPETITION

Registrations for the upcoming T20 Blast competitions are to be held on 21st October at Riverside No 3 Oval. Beginning at 4.30pm and concluding at 6.30pm. Age groups range from U/8's to U/11's. For further information contact Tamworth Cricket Club on 0423470357. Competitions are running for both boys and girls teams.

2015 SWIMMING CARNIVAL

The Hillvue PS Swimming Carnival has been booked for Friday 6th February 2015. Notes and relevant information will go out early Term 1 next year.

STEWART HOUSE HAND BALLS

New hand balls have arrived and are at the front office for sale for \$3.00



TAMWORTH JUNIOR CRICKET

in2CRICKET - 4 to 8 years

No 1 Oval Kable Ave - 8.00am to 9.00am,

New player rego fee \$65.00 includes players Pack valued at \$40.00

10 Week Season Starts SATURDAY 11th October

2014 visit—www:tjca.nsw.cricket.com.au

www:playcricket.com.au

How to register

1. Visit [in2cricket.com .au](http://in2cricket.com.au)
2. Enter your postcode into the REGISTER NOW section
3. Select your preferred centre for further details

For more information contact Tamworth Junior Cricket Committee (M) 0427 656 342 or e-mail simon.hood@joblinkplus.com.au



NOTICEBOARD

2014-2015

NSW Family Energy Rebate

\$150*
TOWARDS
ENERGY
BILLS



**APPLY
ONLINE
NOW!**

2 MINUTES TO FILL IN A FORM
<https://applications.fer.trade.nsw.gov.au/>

* eligibility criteria apply



Trade &
Investment
Resources & Energy



**Apply before
Midnight
16 June 2015**

FOR MORE INFORMATION & ASSISTANCE

PHONE - Service NSW 13 77 88

EMAIL - fer.program@trade.nsw.gov.au

WEB - www.resourcesandenergy.nsw.gov.au/info/familyenergyrebate

IGA

Carlo's Independent Supermarket
Robert Street Shopping Village

Ph 6765 8552 - Fax 67623549

Open

Mon - Sat 8 am till 8 pm
Sunday 9 am till 8 pm

Tuesday Pensioners discount

Free delivery for orders above \$20.00



Real bread. Real rewards.



Hi-Fibre Lo-GI
or Chia Loaf

Cob/Vienna

Continental

Block Loaf

6 Traditional
Rolls

Bakers Delight
We're for real.

K Mart Plaza & Tamworth Shopping World

Fantastic Supporters of our Eat Well 2 Learn Well (Breakfast)

Narelle Simmonds

5 Bourke Street

p 6766 2657

m 0419 180 869 f 6766 2658

the **Executive
Laundrette**



you wash

Coin operated laundry open 7 days 6am - 9pm

we wash

Drop off pick up from store or opt for valet service to home or
hand delivered to your workplace Mon to Fri 8am - 6pm

FOR SALE - HILLVUE SCHOOL JACKETS

School jackets can be purchased through the front office.

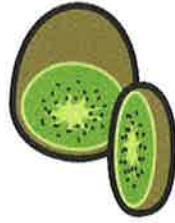
Small, Medium & Large fleecy lined spray jackets \$48.



At Hillvue Public School we expect all students to:

- ✓ Arrive at school on time every day by 9:00am
- ✓ Sit down in the courtyard and wait quietly if you arrive at school before 8:45am
- ✓ Be polite and courteous at all times. Follow directions given by members of staff
- ✓ Show respect for staff and fellow students at all times
- ✓ Hand mobile phones into the front office on arrival at school and understand that toys and electrical devices brought to school are your responsibility
- ✓ Refrain from any bullying, aggressive, intimidating behaviour and inappropriate language
- ✓ Keep hands, feet and objects to yourself
- ✓ Practise fair play and follow the rules of games at all times
- ✓ Play safe games without tackling, wrestling, grabbing or pushing others
- ✓ Care for the school environment by staying off the gardens and putting rubbish in the bin
- ✓ Discuss problems immediately with a teacher

HILLVUE PUBLIC SCHOOL CANTEN--SUMMER MENU 2014--2015



HOT FOOD

Chicken Fingers \$0.60
 Chicken Wedges \$0.70
 Hot Dogs \$2.50
 Mini Dog (Half) \$1.30
 Party Pies \$1.00
 Large Pies \$3.50
 Sausage Rolls \$2.50
 Lasagne \$3.50
 Pizza \$2.50
 Pizza - Half \$1.30
 Chilli Chicken Wrap \$4.00

SANDWICHES & WRAPS

Ham or Chicken
 Cheese
 Vegemite or Jam
 Salad
 Meat & Salad
 Rolls & Wraps 50 cents extra
 Toasted 50 cents extra
SALAD TUBS
 Salad Tub - small
 Salad Tub - large
 Meat \$1.00 extra
 Pasta Salad

BURGERS

Chicken Burger (lettuce)
 Chicken Burger with Salad

FROZEN FOODS

Jelly Sticks \$0.20
 Fruitbombs \$0.50
 Fruit Sticks \$0.60
 TNT's \$1.00
 Paddle Pops \$1.50
 Frozen Yoghurt \$2.00

MONDAY & TUESDAY

Pie & Popper Meal Deal \$4.00
 (1 Junior Pie + Juice Popper)

WEDNESDAY

(5 Chicken Nuggets, Sml Juice \$4.00
 OR Flavoured Milk + t/s)

THURSDAY & FRIDAY ONLY

Milkshakes \$2.00
 Choc/Straw/Caramel
FRIDAY ONLY
 Cheese Burger \$3.80

EVERYDAY

Chicken Caesar Salad (Tub) \$6.00
 Chicken Caesar Wrap \$6.00
 Fresh Fruit \$1.00
 Fruit Cups \$1.00
 Jelly Cups - flavours vary \$1.20
CHIPS
 Sea Salt, Honey Soy, Salt & Vinegar,
Barbeque, JJ's
 Cheese Twist, BBQ Stars \$0.70
 School Hats \$12.00

Please write the student's name and class on the lunch order to ensure the order is placed in the correct class box.

Help is often needed in the Canteen. If you would prefer not to serve at the counter, assistance is needed to prepare food before the 1st break.

Canteen Supervisor, Raeleen Coleman, can be contacted on 67657446

HANNAFORDS BUS SERVICE

Family owned & operated
in the heart of country—
Tamworth

Safe reliable student travel from
Coledale, Westdale, Bective,
Bithramere, Goonoo Goonoo,
Kingswood Estate, Gowrie and
Winton areas of Tamworth.

Carters to a destination of your
choice

Call us on 02 6765 1900
www.hannafordscoaches.com.au



Kevin Bartlett Cycles

111A Bridge Street Tamworth
ph 67652414



Are you looking for a long day care centre for your pre-school children? Your child is welcome! Your local Long Day Care Centre is just around the corner from Hillvue School in Janelle St.

Phone 67628452

Email: reception@janellestreetcentre.com

Christian
Caring
Committed to Excellence

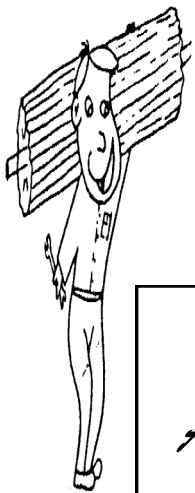
Janelle Street Centre
4 Janelle Street,
South Tamworth

ORTHODONTICS at Tamworth



the team for better smile esteem
- Flexible payment plans
- Straightening smiles without removal of teeth
- Guarantee's on our treatment results

Suite 3, 158 marius street tamworth 2340
p. 67663030 | www.smileesteem.com.au | f. 67663060



Craig
Albertson



99 KABLE AVENUE,
TAMWORTH NSW 2340
Phone: (02) 6766 1583
Mobile: 0409 225 420
**The Domestic and
Industrial Door Specialists**



COFFEE RUN

DRIVE THRU COFFEE

Gasweld Carpark
Cnr Goonoo Goonoo Rd &
Bridge Street
TAMWORTH NSW 2340
coffeerun.pl@gmail.com

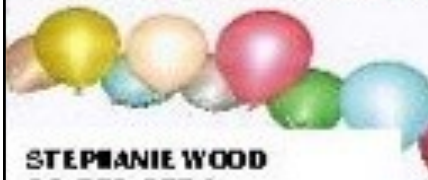
0427 628 277

... Great Coffee ... Great Service ...

FS Party Shop



Catering equipment and hospitality supplies



STEPHANIE WOOD
02 672 3774

44 Barnes Street, PO Box 3589,
Tamworth, NSW 2340
Phone: 02 6762 2844
Fax: 02 6762 2877
Email: iam@fsjp.com.au
Web: www.fsjp.com.au

NOTICEBOARD

DIARY DATES

OCTOBER

Week 2

Wednesday 15 Stage 2 Excursion to Taronga Western Plain Zoo & Old Dubbo Gaol

Wednesday 15 Ears & Eyes check

Week 3

Wednesday 22 IM/ED excursion to Sydney & Blue Mountains

DECEMBER

Week 9

Friday 5 Presentation Day

Week 10

Monday 8 Student reports sent home to parents

Thursday 11 Year 6 Formal Assembly

Thursday 11 Year 6 Farewell

Friday 12 Class Parties



HILLVUE RAIN JACKETS FOR SALE

Compact Poncho/Rain Jacket. Can be worn over your backpack.

\$10 each
from front office.



ASSEMBLY ITEM

Week 2	Friday 17 October	1H
Week 3	Friday 24 October	KL

FRONT OFFICE

All visitors must report to the Front Office upon arrival

Office hours are from 8.30am to 4pm on school days.

Please telephone 02 67657 446 during these hours.

TO HELP KEEP EVERYONE SAFE PLEASE BE SURE TO USE THE PEDESTRIAN CROSSING AT ALL TIMES.



CLOTHING POOL

If anyone has any unwanted Hillvue School uniforms to give away/sell, the School Clothing Pool would greatly appreciate them.

The Clothing Pool is at the canteen and open each morning, or items can be dropped off at Front Office.