



Education &
Communities

Hillvue Public School

“Caring, Smart & Proud”

EdVue

TERM 1 WEEK 4 19th February 2013

Dear Parents & Carers

I had the privilege of attending a ceremony at the Tamworth Community Centre last Wednesday to commemorate the 5th Anniversary of the apology by Prime Minister Kevin Rudd to the stolen generation. It was a very moving and emotional ceremony that paid tribute to the strength and struggles of many thousands of Aboriginal and Torres Strait islander people affected by forcible removal. The ceremony acknowledged the hardships they endured and the sacrifices they made. We also remembered the children who never came home. I was accompanied by our school captains Amika and Thomas who were wonderful ambassadors for Hillvue Public School.

Student Leader Induction

Our student leader induction will be held on Tuesday 26 February commencing at 10.30am in our school hall. The induction will be followed by morning tea for our parents and friends. Everyone is welcome to join us as we acknowledge our student leaders. I look forward to seeing you there and having an opportunity to meet you and have a chat.

Executive Director Visit

Michele Hall Executive Director Connected Communities will visit Hillvue Public School on Tuesday 26 February. Michele will join us for the student leader induction and morning tea. This is a wonderful opportunity for parents and friends to talk to Michele about Connected Communities and how it has and will affect Hillvue Public School.

Student Expectations

I continually talk to students about respect and the expectation of working in class and not disrupting the learning of others. Most students follow class rules, work hard in class and follow teacher instructions but some students are failing to get the message. I make no apology for

supporting teachers and students who wish to learn by imposing consequences for inappropriate action. We have wonderful programs and opportunities in place to support students. We also talk about having pride in our school and pride in ourselves by wearing uniform to school and putting rubbish in the bin. All students are responsible for their actions and I seek your support in talking to your children and the children in your care about appropriate behaviour at school.

Chris Shaw

Executive Principal



Connor,
Alyssa and
Zali
enjoying
time in the
library.

Diary Dates - Term 1

Week 4	Thursday 21 February ARL Visit 1.50pm to 2.50pm
Week 5	Tuesday 26th February Student Leader Induction 10.30am in hall Tuesday 26th February Adam Hill Performance Aboriginal Artist K-6 Hall 1.45pm to 2.45pm
Week 5	1 March 9.15am K-6 Assembly
Week 6	Wednesday 6 March P&C Meeting 6pm
Week 7	Wednesday 13 March P&C Disco Kidco

NOTICEBOARD

BIRTHDAYS THIS WEEK:

Zac S	21/02
Rhiannon W	21/02
Tialas C	23/02



Commonwealth Bank

Student Banking

Well done to all of those children that have started back banking. It is good to see some new students have joined up too.

Next Friday I will start the weekly draw again and one lucky boy or girl will win the opportunity to choose something out of the Commonwealth Bank Magic Prize box. So keep those bank books coming in every Friday.

Mrs Eggins

Leader Induction Ceremony

Hillvue Public School would like to invite you to attend the formal induction of our 2013 Leaders.

The ceremony will be held **Tuesday 26th February**, commencing at **10.30am** in the hall.

The induction will be followed by morning tea for the parents and friends.

Clothing Pool

Our Clothing Pool is URGENTLY in need of second hand uniforms.

If you have any uniforms in good condition that you no longer require, could you please drop them into Mrs Holland in the canteen.

Thank you.

Mrs Holland

Monitoring Absences at Hillvue Public School

1. Attendance is monitored on a daily basis by the Attendance Officer.
2. The Attendance Officer conducts a Phone Intervention Program every day by calling parents of the absent children to follow up why children aren't present at school.
3. Initial unexplained absences receive level one letter sent home reminding parents and carers of the need to explain absences.
4. Absences must be explained within seven days.
5. On going unexplained absences - level two letter sent home. This is an official Department of Education and Communities letter signed by the Principal. Phone calls to parents may also be made.
6. Continuing unexplained absences - Referral to Home School Liaison Officer. This will lead to an attendance plan meeting. If the issue of attendance is not resolved then prosecution may take place.
7. Large numbers of sick days may lead to the school requesting a medical certificate for further sick days. This is a requirement advised by the Home School Liaison Office.
8. The above may also refer to partial absences, particularly late arrival to school on a continuing basis.

SPORTSVUE

OzTag and Touch Update

Unfortunately at this stage Hillvue PS does not have enough nominations to register any teams in either the Monday Afternoon Touch or OzTag competitions.

After contacting both convenors it may be possible for individuals to still nominate but they will be placed in another school's team.

If your son/daughter is still keen to play in either competition please see Mrs Kenniff and she will give you the contact information for both sports.

If no further nominations from players are received this week any money already paid will be returned to students.

Visiting Show - "ADAMORIGINAL"

Next Tuesday, 26th February Adam Hill will be visiting Hillvue with his performance "Adamoriginal".

Cost: \$5

Time: 1.45-2.45pm

This is a whole school performance.

Please return permission note to classroom teacher.



Thursday Night Basketball Competition

We have entered the following team in the Thursday Night Competition.

Senior Girls –Hillvue Shooting Stars

Shontaia Berry, Kimmi Smallwood, Telina Brown, Sharnai McKee, Sharika Nean-Bell, Amika Johnson, Shontoe Nicholls, Jahlamarri Colonel, Zali Lake, Tricia-Rae Hamptom.

Please pay your \$10.00 team nomination fee to the top office and your \$65.00 registration fee at the stadium this week.

We need 3 to 5 players to make a junior girl's team and lots more junior and senior boy players.

Thanks

Mrs McDonald

NRL Visit

On Thursday 21st February 2013, NRL Development Officer Zac Russ will be visiting our school. As part of the NRL Community Carnival he will be accompanied by players from the Newcastle Knights.

During this visit Zac and the players will be talking about the NRL's "Tackling Bullying" campaign, showing a short DVD related to the anti bullying program and answering questions from the students. Some prizes may be given during the session.

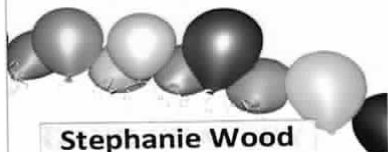
The visit will take place in the hall between 1.50pm and 2.50pm and will involve all students.

We look forward to the visit, photos and a report in next week's Edvue.



FSDP Party Shop

Catering equipment and hospitality supplies



Stephanie Wood
Phone: 02 6762 3774

44 Barnes Street, PO Box 3589,
Tamworth, NSW 2340
Phone: 02 6762 2844
Fax: 02 6762 2877
Email: ian@fsdp.com.au
Web: www.fsdpc.com.au



EASTER'S LANDSCAPE SUPPLIES

• SAND • SOIL • MULCHES • FIREWOOD • PAVERS
• DECORATIVE GRAVELS • RETAINING WALL BLOCKS

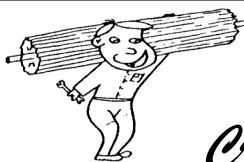
OPEN &
DELIVER
7 DAYS

Hume Street, Tamworth 67 620 650



Kevin Bartlett Cycles

111A Bridge Street Tamworth
ph 67652414



BUILD-A-DOOR

Craig Albertson



99 KABLE AVENUE, TAMWORTH NSW 2340

Phone: (02) 6766 1583 Mobile: 0409 225 420

The Domestic and Industrial Door Specialists



Hillvue uses DAIRY FARMERS MILK

- White & flavoured milk
- Macquarie Valley Juices
- Dairy Foods

Chris and Linda Sommers
1137 Duri Dungowan Rd
Tamworth 67670217



HANNAFORDS COACHES

Family owned & operated—
in the heart of country—Tamworth

Specialising in:

Safe reliable student travel from Coledale, Westdale, Bective,
Bithramere, Goonoo Goonoo, Kingswood Estate, Gowrie and
Winton areas of Tamworth.

Carters to a destination of your choice

Call us on 02 67651900



IGA

Carlo's Independent Supermarket Robert Street Shopping Village

Ph 6765 8552 - Fax 67623549

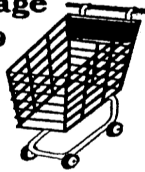
Open

Mon - Sat 8 am till 8 pm

Sunday 9 am till 8 pm

Tuesday Pensioners discount

Free delivery for orders above \$20.00



Real bread. Real rewards.



Bakers Delight
We're for real.

K Mart Plaza & Tamworth Shopping World
Fantastic Supporters of our Eat Well 2 Learn Well
(Breakfast)



Are you looking for a long day care centre for your
pre-school children? Your child is welcome! Your
local Long Day Care Centre is just around the corner
from Hillvue School in Janelle St. Phone 67628452
Email: reception@janellestreetcentre.com

**Christian
Caring
Committed to Excellence**

Janelle Street Centre
4 Janelle Street,
South Tamworth

ORTHODONTICS at Tamworth



the team for better smile esteem

- Flexible payment plans

- Straightening smiles without removal of teeth

- Guarantee's on our treatment results

Suite 3, 158 marius street tamworth 2340
p. 67663030 | www.smileesteem.com.au | f. 67663060

REWARDS PROGRAM

We'd like to give a little something back...

Every dollar you spend with Flight Centre Tamworth can now benefit Hillvue Public School.

All you need to do is mention Hillvue Public School when making your booking which can include airfares, accommodation,
bus travel through to travel insurance and visas.

LOW PRICE PROMISE – If you happen to find a cheaper available price, we'll beat it.
Call 67555900 or visit us at Shop T12, City Plaza.

**FLIGHT
CENTRE**
Unbeatable