



Education &
Communities

Hillvue Public School

“Caring, Smart & Proud”

EdVue

TERM 4 WEEK 8 28th November, 2012

WELCOME

On Monday at a special staff meeting, Mrs Michelle Hall Executive Director of Connected Communities announced that Mr Chris Shaw will be our Acting Executive Principal for semester one 2013. We look forward to Mr Chris Shaw joining our team as the Connected Community journey begins.

SCRIPTURE

Today we began the end of year celebrations with our final scripture lesson for 2012.

Thank you to Mr Jeff Chambers and the combined churches who volunteer their time on Wednesdays and teach scripture throughout Hillvue. We truly value your partnership with our school community.



EVALUATION

Last Thursday Mr Neil Pryor visited Hillvue to conduct an evaluation on the programs that we are delivering to our students. He was most impressed by the calm and hard working environment

he encountered as he visited the classrooms. Thankyou, to our community members who attended the afternoon tea and discussed their expectations for Hillvue students and to the staff who were involved.

SWIMMING

Thankyou, to Mrs Galvin and Mr Hollinworth for organising the swimming program.

Swimming and water safety is an important skill, especially in Australia where we have such a love for the great outdoors. The basic skills of swimming are taught throughout these lessons.

It is important that these skills be regularly practiced – have fun as a family and visit our local swimming pools.

STUDENT SAFETY

Reminder - The front and back car parks are for staff, delivery services, emergency services and student taxis only. Please do not use the car parks as a drop off and pick up point - this is for the safety of our children. Thank you.

ENJOY READING TO YOUR CHILD

How do you make reading a joy and not a chore for your child? One way is to find information and interesting facts about things that intrigue or interest your child in books, magazines or on the internet.

Read and talk about what you find out. Here are some other tips: <http://www.schoolatoz.nsw.edu.au/homework-and-study/english/english-tips/ten-ideas-to-help-your-child-with-reading>

COMMUNITY CHRISTMAS BREAKFAST

Wednesday 5th December Hillvue in conjunction with the University of Rural Health Newcastle will celebrate another successful year of Eat Well 2 Learn Well. Parent and community members are most welcome to attend breakfast at 8.15am.

PRESENTATION DAY

Will be held next Friday 7th December at 9.30am in the hall. Letters will go home this week to families of all award recipients.

YEAR 6 FAREWELL

Will be held on Monday 10th December, 2012 from 5.45—8pm in the Chillingworth Room at the West Tamworth Leagues Club. Please bring your payment of \$20 to the front office.

Have a great week!

Tina White
Principal

Diary Dates Term 4

Week 8

Mon, Tues, Thurs
Wed 28 Nov

Intensive Swimming
K-6 Final Scripture - Christmas
Elective Sport 3-6

Week 9

Wed 5 Dec

Elective Sport 3-6
PHS Orientation Day
6pm - P & C meeting
Presentation Day

Fri 7 Dec

Week 10

Monday 10 Dec
Friday 14 Dec

Year 6 Farewell
Class Parties
Reports Sent Home

Week 11

Wed 19 Dec
Thur 20 & Fri 21 Dec

Students last day 2013
School Development Days

RAINFORESTS

By 3/6 W

- In the rainforest, there are snakes. In the rainforest, there are birds. In the rainforest, there are insects and lizards – Rick
- It rains a lot in rainforests. There are lots of different animals that live there like snakes and birds. Rainforests have very dense, warm, wet forests - Madison
- Australia has both tropical and temperate rainforests. It rains a lot in a rainforest. Temperate rainforests can be found in Queensland, New South Wales, Victoria and Tasmania. A rainforest is a complete ecosystem – Jyler



- Rainforests are havens for millions of animals such as insects, reptiles, amphibians, birds and mammals – Felicity
- Tropical rainforests cover about 7% of the earth's surface. The upper parts of the rainforest is called the canopy – Johnno
- Many indigenous groups of people live in rainforests. They get their food by hunting for meat and fishing in the rivers. They also gather fruit, starchy root vegetables and berries – Aaliyah
- The average annual rainfall in rainforests is between 175 cm to 200cm but can reach as high as 1000cm per year - Schyala

AWARDS AND PHOTOS



PRINCIPAL'S AWARDS

For Emotional Resilience

KM: Hollie Schlenert
KL: Jack Perrett
1O: Taya Brosie
1/2D: Kassidee Dawson
2D: Kalani Rangi
3G: Tyler Hughes
3/4O: Michelle Porter
4M: Levi Nean
5C: Alyssa Flett
5/6: Kimmi Smallwood
6CG: Eithan Hughes
3/6W: Schyala Carter



ACADEMIC ENDEAVOUR and ACHIEVEMENT AWARDS

| | |
|---------------------------------------|---|
| KM: Janaya Sampson, Breanna Robertson | 3/4O: James Durant, Mathieu Fogden, |
| KL: Jamaul Haines, Seth Turner | 4M: Steven Murraray, Maene Trindall |
| 1O: Montanna Hughes, Sarah Power | 5C: Jada Harpur-Suey, Ebony Marshall |
| 1/2D: Victoria Bishop, Bailey Bergan | 5/6H: Moesha Johnson, Holden Norton |
| 2D: Regan Manttan, Alice Jerome | 6CG: Debra Flett, Sophie McLeod |
| 3G: Katelyn Edmonds, Kamyra Dixon | 3/6W: Madison Francisco, Aaliyah Lawrence |



AWARDS AND PHOTOS



KINDERGARTEN AND STAGE 1 AWARDS

Student of the Week

- KM: Janaya Sampson
KL: Leah Weribone
10: Zoey Colonel
1/2D: Eleisha McKay
2D: Bridget McLean

Merit Award

- KM: Lachlan Croaker, Tyrone Davis
KL: Jakala Flett, Kylie Sullivan
1O: Damon McKay, Dshan Denniss
1/2D: Meleah Cook, Thomas Durant
2D: Thomas Sullivan, Jerome



STAGE 2 AWARDS

Student of the Week

- 3G: Kamyra Dixon
3/40: Taura Jones
4H: Tanesha Adams-Lawrence



Star Award

- 3G: Tyrese Johnson
3/40: Danny Girard
4H: Steven Murray



Merit Awards

- 3G: Katelyn Edmonds,
Tristen Croaker
3/40: Xavier Cutmore,
Tamia Haines
4H: Mollie Carter



AWARDS AND PHOTOS



STAGE 3 AWARDS

Student of the Week

5C: Shontae Nicholls, Thomas McGrath

5/6H: Taylor Nean-Bell, Cortney Francicso

6CG: Sophie McLeod, Barbara Flett

3/6W: Schyala Carter



Star Award

5C: Amika Johnson, Jacob Brown

5/6H: Taylor Hicks, Kimmi Smallwood

6CG: Dhalara Knox, Kiarra Dixon

3/6W: Kyle Capper



Merit Award

5C: Malaki Johnson, Alex McKee, Caitlyn Millard

5/6H: Antuan Hampton, Nikita Cameron,

Jahalamarri Colonel, Meleeka Rangi

6CG: Debra Flett, Eithan Hughes, Shyanne Jones, Jellelah Denniss

3/6W: Jyler Nean



Evaluation of the Connecting to Country Program

Dear Parents / Carers,

The Department of Education and Communities is evaluating the Connecting to Country program, which provides cultural training through local Aboriginal communities to principals and teachers from selected schools in NSW. The evaluation is being conducted by ARTD consultants, in order to understand and describe the impact and value of the program for principals and teachers, Aboriginal students, their families and communities.

Consultants from ARTD will be working with Senior Aboriginal Consultants, Tracey Whetnall and Benny Hodges, to collect the views of principals, teachers, students, parents/carers and community members. They are interested in hearing from community members about their experiences of attending the school, and the communication that they have with teachers and the principal.

Parents/carers and community members are invited to participate in a focus group to discuss their child's experience at school as well as their own involvement and communication with the school.

The focus group will last for around 1 hour. All parents/carers and community members are invited to the Coledale Community Centre at 10am on Thursday 29th November 2012. The meeting will be convened by an Aboriginal consultant. Refreshments will be provided.

If you require any further information in regard to the program please contact Mrs Kenniff or Mrs White.

Your support with this evaluation is most appreciated.

NOTICEBOARD

Focus Week

Social Skill GET ALONG

NAME IT . . . LABEL IT

Do you have your name on all your things?

Personal Belongings

- * school bag
- * lunch box
- * books
- * pencil case—pens, pencils, ruler, rubber
- * library bag

School Uniform

- * summer/winter uniform
- * school jumper
- * tracksuit
- * school hat

Sports Equipment

- * bat
- * ball
- * skipping ropes
- * swimmers and towel

What do you do if you don't . . . ask for help

- * mum and dad
- * clothing pool ladies

REMEMBER:

A name and class means an early return of missing things
or look in lost property



Get Along

Respecting important
school rules

COMMONWEALTH BANK

STUDENT BANKING

Anyone student that makes a Deposit between 19th November and 14th December 2012 will go into the Commonwealth Banking

2 draw to win one of twelve IPAD Mini's (16GB with wi-fi valued at \$369.00 each.

KEEP THOSE BANKING DEPOSITS COMING!

BIRTHDAYS THIS WEEK:

Dempsey N 28/11

Connor B 28/11

Jamiah J 29/11



PRESENTATION DAY

FRIDAY 7th DECEMBER

Commencing 9:30 in the school hall.

Come along and help celebrate our student's outstanding efforts
for 2012!



January

| S | M | T | W | T | F | S |
|----|----|----|----|----|----|----|
| | | 1 | 2 | 3 | 4 | 5 |
| 6 | 7 | 8 | 9 | 10 | 11 | 12 |
| 13 | 14 | 15 | 16 | 17 | 18 | 19 |
| 20 | 21 | 22 | 23 | 24 | 25 | 26 |
| 27 | 28 | 29 | 30 | 31 | | |

February

| S | M | T | W | T | F | S |
|----|----|----|----|----|----|----|
| | | | | | 1 | 2 |
| 3 | 4 | 5 | 6 | 7 | 8 | 9 |
| 10 | 11 | 12 | 13 | 14 | 15 | 16 |
| 17 | 18 | 19 | 20 | 21 | 22 | 23 |
| 24 | 25 | 26 | 27 | 28 | | |

March

| S | M | T | W | T | F | S |
|----|----|----|----|----|----|----|
| | | | | | | 1 |
| 2 | 3 | 4 | 5 | 6 | 7 | 8 |
| 9 | 10 | 11 | 12 | 13 | 14 | 15 |
| 16 | 17 | 18 | 19 | 20 | 21 | 22 |
| 23 | 24 | 25 | 26 | 27 | 28 | 29 |
| 30 | | | | | | |

April

| S | M | T | W | T | F | S |
|----|----|----|----|----|----|----|
| | | 1 | 2 | 3 | 4 | 5 |
| 6 | 7 | 8 | 9 | 10 | 11 | 12 |
| 13 | 14 | 15 | 16 | 17 | 18 | 19 |
| 20 | 21 | 22 | 23 | 24 | 25 | 26 |
| 27 | 28 | 29 | 30 | | | |

May

| S | M | T | W | T | F | S |
|----|----|----|----|----|----|----|
| | | | 1 | 2 | 3 | 4 |
| 5 | 6 | 7 | 8 | 9 | 10 | 11 |
| 12 | 13 | 14 | 15 | 16 | 17 | 18 |
| 19 | 20 | 21 | 22 | 23 | 24 | 25 |
| 26 | 27 | 28 | 29 | 30 | 31 | |

June

| S | M | T | W | T | F | S |
|----|----|----|----|----|----|----|
| 30 | | | | | | 1 |
| 2 | 3 | 4 | 5 | 6 | 7 | 8 |
| 9 | 10 | 11 | 12 | 13 | 14 | 15 |
| 16 | 17 | 18 | 19 | 20 | 21 | 22 |
| 23 | 24 | 25 | 26 | 27 | 28 | 29 |

July

| S | M | T | W | T | F | S |
|----|----|----|----|----|----|----|
| | 1 | 2 | 3 | 4 | 5 | 6 |
| 7 | 8 | 9 | 10 | 11 | 12 | 13 |
| 14 | 15 | 16 | 17 | 18 | 19 | 20 |
| 21 | 22 | 23 | 24 | 25 | 26 | 27 |
| 28 | 29 | 30 | 31 | | | |

August

| S | M | T | W | T | F | S |
|----|----|----|----|----|----|----|
| | | | | 1 | 2 | 3 |
| 4 | 5 | 6 | 7 | 8 | 9 | 10 |
| 11 | 12 | 13 | 14 | 15 | 16 | 17 |
| 18 | 19 | 20 | 21 | 22 | 23 | 24 |
| 25 | 26 | 27 | 28 | 29 | 30 | 31 |

September

| S | M | T | W | T | F | S |
|----|----|----|----|----|----|----|
| 1 | 2 | 3 | 4 | 5 | 6 | 7 |
| 8 | 9 | 10 | 11 | 12 | 13 | 14 |
| 15 | 16 | 17 | 18 | 19 | 20 | 21 |
| 22 | 23 | 24 | 25 | 26 | 27 | 28 |
| 29 | 30 | | | | | |

October

| S | M | T | W | T | F | S |
|----|----|----|----|----|----|----|
| | | 1 | 2 | 3 | 4 | 5 |
| 6 | 7 | 8 | 9 | 10 | 11 | 12 |
| 13 | 14 | 15 | 16 | 17 | 18 | 19 |
| 20 | 21 | 22 | 23 | 24 | 25 | 26 |
| 27 | 28 | 29 | 30 | 31 | | |

November

| S | M | T | W | T | F | S |
|----|----|----|----|----|----|----|
| | | | | | | 1 |
| 2 | 3 | 4 | 5 | 6 | 7 | 8 |
| 9 | 10 | 11 | 12 | 13 | 14 | 15 |
| 16 | 17 | 18 | 19 | 20 | 21 | 22 |
| 23 | 24 | 25 | 26 | 27 | 28 | 29 |
| 30 | | | | | | |

December

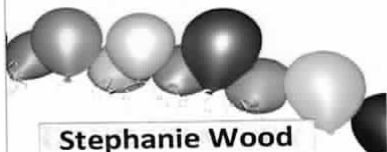
| S | M | T | W | T | F | S |
|----|----|----|----|----|----|----|
| | 1 | 2 | 3 | 4 | 5 | 6 |
| 7 | 8 | 9 | 10 | 11 | 12 | 13 |
| 14 | 15 | 16 | 17 | 18 | 19 | 20 |
| 21 | 22 | 23 | 24 | 25 | 26 | 27 |
| 28 | 29 | 30 | 31 | | | |

- Public holidays
- School holidays
- Start of school term dates
- School Development Days*
- Additional vacation days for Western Division
- Start of Term 1 for students in Western Division
- School Development Day (Western Division)
- Selective high school placement test 14 March / NAPLAN tests 14-16 May / Opportunity class placement test 24 July / ESSA online 12 Nov
- Education Week

*The first day of Term 1 is a School Development Day. Check with your school for Terms 2, 3 and 4 as schools may vary these days.

FSDP Party Shop

Catering equipment and hospitality supplies



Stephanie Wood
Phone: 02 6762 3774

44 Barnes Street, PO Box 3589,
Tamworth, NSW 2340
Phone: 02 6762 2844
Fax: 02 6762 2877
Email: ian@fsdp.com.au
Web: www.fsdp.com.au



EASTER'S LANDSCAPE SUPPLIES

• SAND • SOIL • MULCHES • FIREWOOD • PAVERS
• DECORATIVE GRAVELS • RETAINING WALL BLOCKS

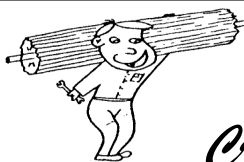
OPEN &
DELIVER
7 DAYS

Hume Street, Tamworth 67 620 650



Kevin Bartlett Cycles

111A Bridge Street Tamworth
ph 67652414



BUILD-A-DOOR

Craig Albertson



99 KABLE AVENUE, TAMWORTH NSW 2340

Phone: (02) 6766 1583 Mobile: 0409 225 420

The Domestic and Industrial Door Specialists



Hillvue uses DAIRY FARMERS MILK

- White & flavoured milk
- Macquarie Valley Juices
- Dairy Foods

Chris and Linda Sommers
1137 Duri Dungowan Rd
Tamworth 67670217



HANNAFORDS COACHES

Family owned & operated—
in the heart of country—Tamworth

Specialising in:

Safe reliable student travel from Coledale, Westdale, Bective, Bithramere, Goonoo Goonoo, Kingswood Estate, Gowrie and Winton areas of Tamworth.

Carters to a destination of your choice

Call us on 02 67651900



IGA

Carlo's Independent Supermarket Robert Street Shopping Village

Ph 6765 8552 - Fax 67623549

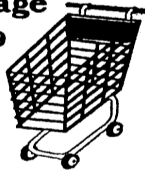
Open

Mon - Sat 8 am till 8 pm

Sunday 9 am till 8 pm

Tuesday Pensioners discount

Free delivery for orders above \$20.00



Real bread. Real rewards.



Bakers Delight
We're for real.

K Mart Plaza & Tamworth Shopping World
Fantastic Supporters of our Eat Well 2 Learn Well
(Breakfast)



Are you looking for a long day care centre for your pre-school children? Your child is welcome! Your local Long Day Care Centre is just around the corner from Hillvue School in Janelle St. Phone 67628452
Email: reception@janellestreetcentre.com

Christian
Caring
Committed to Excellence

Janelle Street Centre
4 Janelle Street,
South Tamworth

ORTHODONTICS at Tamworth



the team for better smile esteem

- Flexible payment plans

- Straightening smiles without removal of teeth

- Guarantee's on our treatment results

Suite 3, 158 marius street tamworth 2340
p. 67663030 | www.smileesteem.com.au | f. 67663060

REWARDS PROGRAM

We'd like to give a little something back...

Every dollar you spend with Flight Centre Tamworth can now benefit Hillvue Public School.

All you need to do is mention Hillvue Public School when making your booking which can include airfares, accommodation, bus travel through to travel insurance and visas.

LOW PRICE PROMISE – If you happen to find a cheaper available price, we'll beat it.
Call 67555900 or visit us at Shop T12, City Plaza.

**FLIGHT
CENTRE**
Unbeatable